

1.0 PROJECT DESCRIPTION

At the request of Ecology and Environment (E&E), Clinton Brown Company Architecture, pc (CBCA) has completed an historic resources reconnaissance survey of the area surrounding the proposed Chautauqua Windpower Project in southwestern Chautauqua County, New York (Figure 1-1). The proposed Windpower Project consists of up to 34 wind turbines to be installed on elevated ground atop the Lake Escarpment, which runs roughly parallel to the shore of Lake Erie, in the Towns of Ripley and Westfield, Chautauqua County. The proposed project also includes approximately 15 miles of access roads and subsurface utilities, as well as an electrical substation. The primary goal of the reconnaissance survey was to identify and collect preliminary documentation for properties located within the Chautauqua Windpower Project's Zone of Visual Influence (ZVI) that are potentially eligible for listing in the National Register of Historic Places (NRHP). The survey was undertaken with guidance from the New York State Historic Preservation Office (NYSHPO), part of the Office of Parks, Recreation and Historic Preservation (NYOPRHP). The NYOPRHP review number for the project is 02PR4628. The reconnaissance survey will be followed by an intensive survey of select properties to be determined by NYSHPO staff with assistance by CBCA.

The ZVI is defined as a zone within the five-mile radius surrounding the turbine locations from which one or more of the turbines are potentially visible. The wind turbines will have a height, including both towers and blades, of up to 400 feet. The Chautauqua Windpower project includes thirty-four primary locations and twenty alternate locations for the turbines, for a total of fifty-four possible locations. E&E determined the ZVI through use of a GIS software program that is based on topographical elevation. Yellow shaded areas on the ZVI map indicate where the turbines would not be visible within the radius, which is identified by E&E as the "Zone of Zero Visibility" (Figure 1-2). Accordingly, all locations within the five-mile radius not in the shaded areas of the ZVI are within view of at least one turbine.

The five-mile ZVI radius project area predominantly encompasses land in the Towns of Ripley and Westfield, including the Villages of Westfield and Ripley, and the hamlets of Barcelona and State Line Station. A small section of the northern portion of the Town of Chautauqua and Village of Mayville are also within the ZVI. Most of the ZVI area in the Town of Chautauqua is within the Zone of Zero Visibility. The southern edge of the ZVI extends into Pennsylvania. Note: the current survey only addresses the ZVI within New York State.

Figures 1-3 through 1-12 are representative photographs of the Lake Escarpment from all three towns. The general project area shots are keyed to a map at the end of this section (Figure 1-13).

The project manager was Christine M. Longiaru, CBCA architectural historian. The CBCA project team included sub-consultant, Pamela J. Pollack. Rebecca Bateson-Brown served as the project assistant. The CBCA project team members meet or exceed 36 CFR Part 61 "Professional Qualification Standards" of the Secretary of the Interior's Standards. (See Appendix B)



Figure 1-1. General location of the Chautauqua Windpower Project Zone of Visual Influence (ZVI) in southwestern Chautauqua County, New York. Note: Pennsylvania border at left.

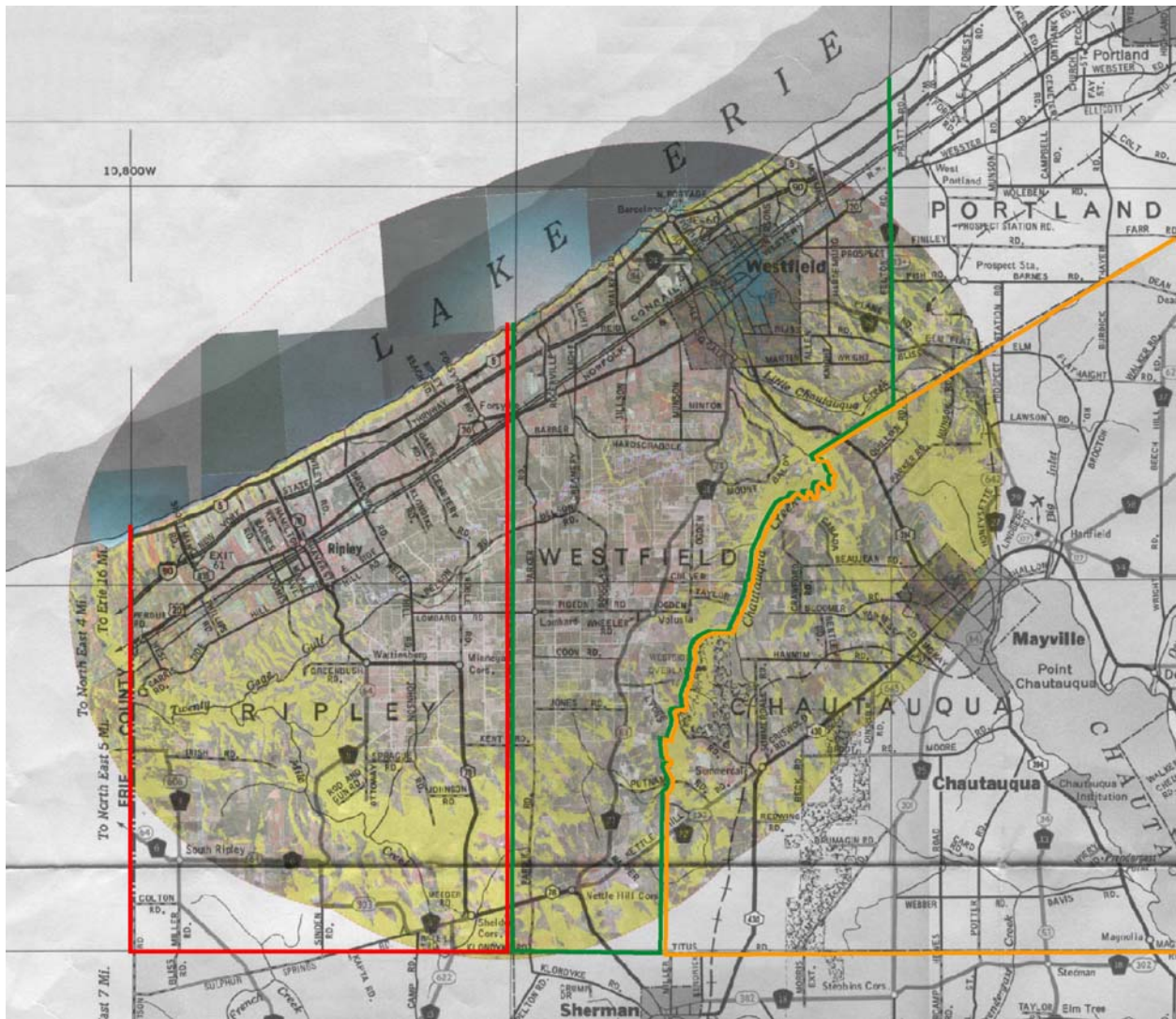


Figure 1-2. The Zone of Visual Influence (ZVI) is defined as a zone within the five-mile radius surrounding the turbine locations from which one or more of the turbines are potentially visible. The yellow shaded areas indicate Zones of Zero Visibility.



Figure 1-3. View of Lake Escarpment from US Rte 20 in Ripley, at Brockway Rd., facing south-southwest.



Figure 1-4. View of Lake Escarpment from US Rte 20 in Ripley, just west of Cemetery Rd, facing southwest.



Figure 1-5. View of Lake Escarpment from US Rte 20 in Ripley, just west of Cemetery Rd, facing south.



Figure 1-6. View from the top of the Lake Escarpment from Douglas Road, near Volusia Cemetery in Westfield (T), facing northwest.



Figure 1-7. View of Lake Escarpment from North Gale Road, north of the railroad line, facing southwest from the western edge of Westfield Village.



Figure 1-8. View of Lake Escarpment from near 31 South Gale Road, south of West Main Street (US 20), facing southwest from the western edge of Westfield Village.



Figure 1-9. View of Lake Escarpment from south of 31 South Gale Road, south of West Main Street (US 20), facing south-southwest from the western edge of Westfield Village.



Figure 1-10. View of Lake Escarpment from Mount Baldy Road in Westfield (T), facing west.



Figure 1-11. View of Lake Escarpment from Portage Road (NY 394), west of terminus of Parker Road, in Chautauqua, facing north-northwest.



Figure 1-12. View of Lake Escarpment from Portage Road (NY 394), west of terminus of Parker Road, in Chautauqua, facing west.

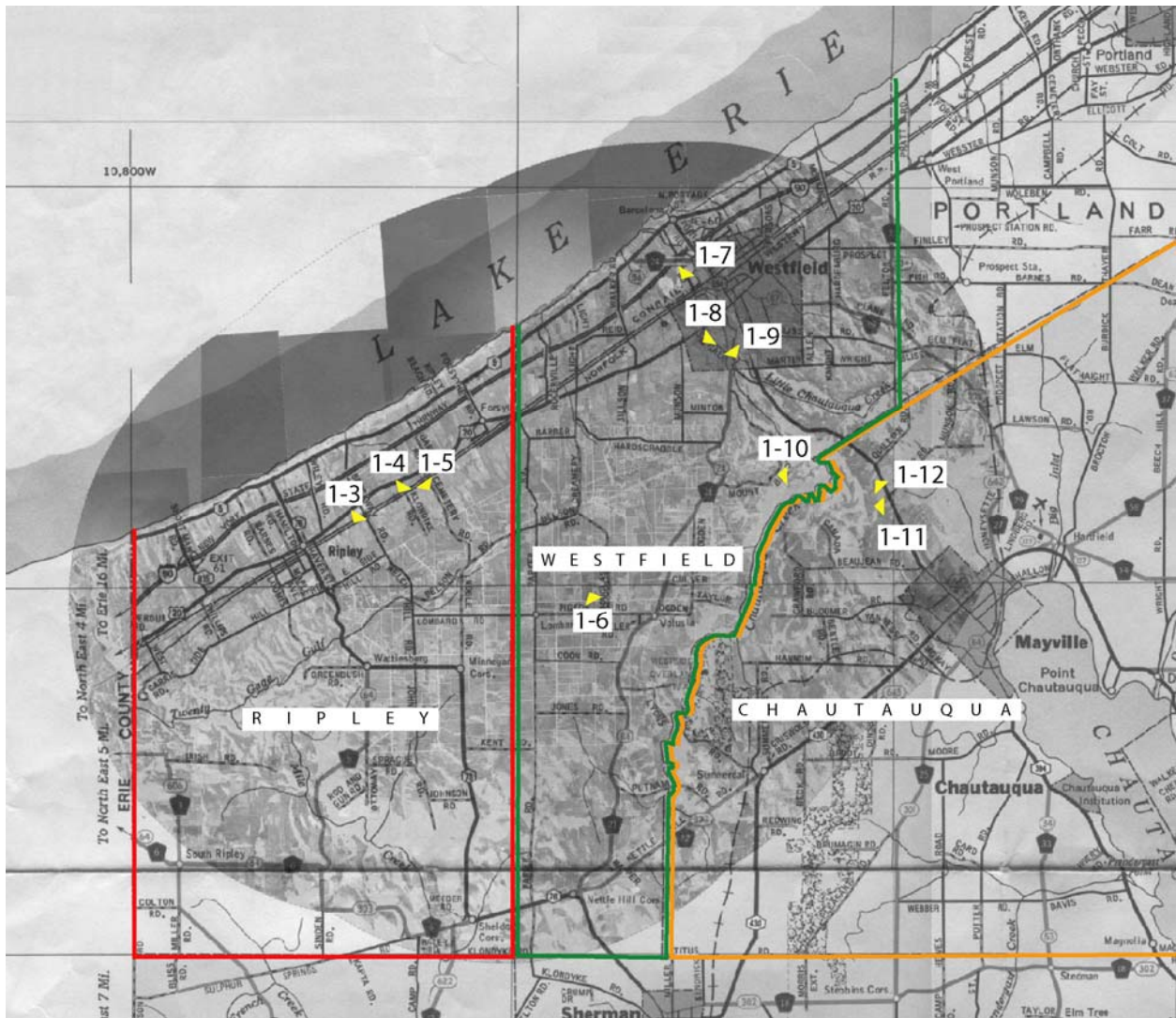


Figure 1-13. Locational map for Chautauqua Windpower project area photographs.